



## Exhibitions, News & Events

Quarterly newsletter of the Tairāwhiti Museum & Art Gallery  
Te Whare Taonga o te Tairāwhiti  
December 2017 ISSN 117-5890



## SHOP

Our shop holds a fabulous range of product to choose from and we continue to add new items. Whether you are looking for a gift, wanting to send something overseas or buy a treat for yourself, there is something for everyone.

We believe there are some wonderful choices for all occasions, so do come and have a look. As always, the museum continues to support local artists including Seymour May, Julia Gould, Hugh Lloyd and Michael Stammers. All purchases at the museum shop provide funding for the museum so not only can you buy a fabulous present, but also support the museum at the same time. Friends of the Museum receive a 10% discount on all purchases (excluding sales).



## EXHIBIT CAFE



Great coffee and food, prepared daily, served with a smile. **Exhibit Café** is open for lunches, brunches and morning teas. Select from the delicious fresh and seasonal food on the blackboard menu, with gluten free and vegetarian options available. Dine in the sun on wide decks overlooking Kelvin Park, or inside in year round air-conditioned comfort.

Eugenie Derwin and her staff do all the baking on the premises using predominantly local ingredients. Exhibit Café also offers catering services.

10% discount for Friends of the Museum

Opening hours: 10.00am to 2.00pm. Monday to Saturday. Closed Sundays.



Enquiries contact: Eugenie Derwin at Tairāwhiti Museum on (06) 867 3832.

Mob: 021 222 7012.

Email: eugeniederwin@gmail.com

Mon. - Sat. 10am-4pm  
Sun. 1.30pm-4pm  
Stout Street • Gisborne  
06 8673832



Weight on the back of Te Kuri-a-Papa  
by Peggy Ericson



Thank you to the Friends of the Museum for purchasing the three winning art works, by Melanie Tangare Baldwin, Peggy Ericson and Sam Florence in the 2017 Te Ha art award for the museum collection.

At the October 2017 AGM the Friends of the Museum appointed a new President, Lina Marsh. Our sincere thanks to outgoing President Clare Robinson. The Friends of the Museum Committee for the year are: Lina Marsh (President), Irene Smith (Treasurer), Deb Williams (Secretary), Clare Robinson, Nick Tupara, Nikki Searancke, Kristine Walsh, David Butts, Michael Muir, Norman Maclean and Chris Smith.

## Friends Committee update

Annual membership is \$30 (individual), \$40 (family) and \$100 (business). Please ask at reception for more information or to join.

Friends of the Museum receive a 10% discount in the museum shop and at exhibitions. Friends also receive a copy of the quarterly newsletter in the post, invitations to exhibition previews and exclusive events and a 10% discount off the usual price for art supplies and framing from Personality Framers.

Friends of Tairāwhiti Museum provide vital support to our activities – allowing us to purchase works for the collection, run activities and events, and fund projects which help maintain the museum. As a friend you are helping us ensure the museum stays a vibrant and exciting place to visit.

## BECOME A FRIEND OF THE MUSEUM

### NEW ACQUISITIONS

The museum is offered many interesting items for the collection over the course of the year. Often they are seemingly ordinary, everyday objects, but what makes each of them special and worthy of collecting is the wonderful stories they can tell us about our region's history.

This wicker basket is certainly one such object.

This basket was used by William Hamilton (known as Ham) Hannah (b. 1920, d.1967) to deliver bread for Walter Findlay's Bakery in the 1930s.

Ham would have delivered bread around Gisborne by horse and cart. A few people out there may remember having bread delivered by him, perhaps using this basket!

Ham served as a Driver in the Army Service Corps in the Second World War and continued to work as a driver when he returned to Gisborne after the war. In the 1960s, he was the Custodian at Churchill Park. He was married to Sarah (Sadie) and they had four children.

We would like to thank Julie Hannah for gifting her father-in-law's breadbasket to the museum.



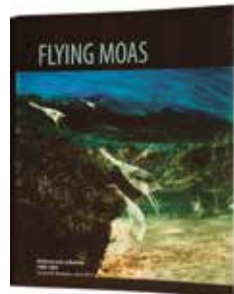
Ham and two of his four children, Kevin (left) and Gareth (right), posing in the basket in the garden of the family's home, 1948.



### BOOKS FOR SALE



**RECOVERY - Womens' Overseas Service In WW1** by Kay Morris Matthews (published by Tairāwhiti Museum and EIT) – on sale at Tairāwhiti Museum, \$35



**FLYING MOAS**, publication by Sheridan Gundry that tracks the historical flight path of the Flying Moas, (published by Tairāwhiti Museum – on sale at Tairāwhiti Museum, \$35



https://www.facebook.com/tairawhitimuseumgisborne  
https://tairawhitimuseum.wordpress.com/

Like us on Facebook and follow our blog to keep up to date with stories, events and goings-on at Tairāwhiti Museum.

- Eloise Wallace

Have a safe and happy summer in our beautiful part of the world, we look forward to seeing you at the museum over the summer - for the exhibitions, or just for a cup of coffee!

With Christmas just around the corner, I'd also like to encourage you to consider purchasing a gift or two from the museum shop. We aim to have a range of some beautiful pieces by a number of local artists including Kerry Fox, Tamsin Wilson, Michael Stammers, Julia Gould, Seymour May and Heather Van Wyk. For a unique present, we can also supply digital or physical prints from our wonderful collection of historical photographs.

Café and museum staff will continue to work closely together to ensure our museum visitors and café patrons have an enjoyable experience when they visit our facility. Friends of the Museum will continue to receive a 10% discount on purchases from the café, and by supporting the café you are also supporting the activities of the museum.

In October, we fondly remembered Moy Chen, who has been the manager of Exhibit Café for almost 10 years. She will certainly be missed by museum staff and her regular local patrons - we wish her all the very best for this new phase of her life. We are delighted to now be working alongside new café manager, Eugenie Derwin. Exhibit is a new venture for Eugenie, and she brings with her a passion to create fresh, seasonal and delicious food. Eugenie and her young family have been living in Gisborne for a year, and are loving the lifestyle here - in addition to running Exhibit Café they grow citrus, stone fruit and strawberries on their lifestyle block in Ormond. Eugenie is half French, so we are looking forward to a kiwi/French twist on the menu in the future.

A modern museum is a diverse business and at Tairāwhiti Museum, our café and shop are a key part of the overall experience of visiting the museum, as well as an important source of income that supports our more 'traditional' activities: developing exhibitions, education programmes and caring for collections. Museum staff would be the first to acknowledge that coffee and museums go hand-in-hand!

In October, we fondly remembered Moy Chen, who has been the manager of Exhibit Café for almost 10 years. She will certainly be missed by museum staff and her regular local patrons - we wish her all the very best for this new phase of her life. We are delighted to now be working alongside new café manager, Eugenie Derwin. Exhibit is a new venture for Eugenie, and she brings with her a passion to create fresh, seasonal and delicious food. Eugenie and her young family have been living in Gisborne for a year, and are loving the lifestyle here - in addition to running Exhibit Café they grow citrus, stone fruit and strawberries on their lifestyle block in Ormond. Eugenie is half French, so we are looking forward to a kiwi/French twist on the menu in the future.

## FROM THE DIRECTOR

### MUSEUM ARCHIVES

The museum holds many historic records relating to the history of the region. Collecting and cataloguing historic material in this collection is ongoing.

We have recently upgraded our database records for the Gisborne Savage Club Programme Collection and have started upgrading entries to the Community Archives Programme Collection. This collection contains over 500 programmes ranging in date from 1892 through to 1962, all from the Gisborne region. Venues included the King's Theatre, the Opera House, City Hall, and Te Puka Hall to name a few. The entertainment included opera, orchestral performances, theatre, boxing, and the Gisborne Competitions Society's medley of events.

In November 1929 at the City Hall, Gisborne's Miss Oriole Faram (b.1914, d.2011) gave a Pianoforte Recital. Miss Faram achieved international fame as a concert pianist. At the age of sixteen she won the open Parisian scholarship offered by Madame de Pachmann Labori in a field of 243 entrants.



Oriole Faram, Auckland Weekly News, 4 October 1928



Programme: Pianoforte Recital 1929. 1999.47.1 [26769] Gifted by Miss I Hunt, 1999.

Other significant regional repositories for archival collections are the HB Williams Memorial Library and the Gisborne District Council Archives. Contact service@gdc.govt.nz for research enquiries.

The Gisborne Photo News (1954-1975) is accessible online and The Poverty Bay Herald (between 1879 and 1920) is available on the website *Paperspast*. Gisborne District Council's Cemetery Records search and *DigitalNZ* are other great online resources for local history researchers. Family history website Ancestry is also available free of charge at the library.

For research enquiries and to make an appointment to view material in the museum's archive collections please contact museum archivist Christine Page on 867 3832 or christinepage@tairawhitimuseum.org.nz

The museum research centre will be closed for the Christmas period from 18 December 2017, reopening 15 January 2018.

# EXHIBITIONS AND EVENTS : December 2017 - February 2018

## MŌ TE EMEPAEA - For the Empire A diary of WW1

13 October 2017 – 10 December 2017

Ki a koutou Ngāi Mātakitaki tēnā koutou katoa. Tēnā koutou i tae mai ki te mātakitaki i tēnei mahi toi i runga i te kaupapa o te pakanga tuatahi. Ko te tumanako kia miharo koutou ki ngā mahi toi o ngā tohunga nā rātou ngā peita, ngā whakairo, me ngā taonga uku i roto i tēnei whakakitenga me te aroha anō hoki ki a rātou katoa i haere ki rāwāhi ki te pakanga tuatahi. Tēnā koutou, tēnā koutou, tēnā koutou katoa.

"Mō Te Emepeaea" (For The Empire) is a play on Lord Kitchener's finger pointing to members of the Commonwealth that "Your Country Needs You".

This is a personal exhibition based in part on the diaries of Tawhai Riri Tamepo which contains the activities of his platoon and his travels in Europe while on convalescent leave.

Tamepo paints a sobering portrayal of the post war struggles that many endured without governmental assistance which was only available to non-Māori returned servicemen.

Contributing to this memorial are artists: June Grant, Jean Stewart, the late Dr Cliff Whiting, Sandy Adsett, Derek Lardelli, Gabrielle Belz, Steve Gibbs, Baye Riddell, Grant Hall, Ruth Cole, Linda Pirimona, Hoana Forrester and Ereatara Tamepo.

-Curator Erina Tamepo



Artist Jean Stewart works on 'Night Trek in Killarney'

## Jan Linklater My Language of Pattern and Colour

23 February 2018 – 8 April 2018

Even as a small child, patterns fascinated me and lodged in my memory. The theory of colour came later when I started to paint seriously but it is only since I emigrated to NZ that the striking landscape and light and a change to acrylic have vigorously combined pattern and colour.

Landscape was my starting point but as a development of my life drawing I have come intrigued by the designs created by body postures, the negative and positive patterns they make on the background, as well as the expressive nature of the pose.

Having painted mainly in watercolours in the UK, sometimes that technique breaks through in the acrylics as a looser freer style.

Initially trained as a zoologist and having farmed in the Welsh hills, another theme I am addressing is modern man's lack of awareness of other animals and their signals. Adding an underlying message and narrative to my paintings is an area I am starting to develop.

-Jan Linklater



Google Girl

## Toru Tekau Ngā Kaihanga Uku - Māori Clay Artists

9 December 2017 – 4 March 2018  
Opening 5:30pm 8 December 2017

1987 - thirty years ago, saw the birth of a new movement in world ceramics – the formation of KAIHANGA UKU – Māori Clay Artists. Baye Riddell had begun his career as a potter thirteen years earlier ostensibly the first full time Māori potter. In later years he was joined by others such as Manos Nathan, Colleen Ulrich, Paerau Corneal and Wi Taepa. Dubbed *The Tight Five* or *Ngā Tokorima* they have since nurtured and been added to by an accomplished new generation of Māori "Muddies".

At the first hui at Tokomaru Bay in 1987 a three stranded approach was drafted to guide the development of this exciting new entity.

First - we would approach working with clay from a Māori perspective.  
Second – we would share our collective knowledge and resources.  
Third – we would engage with indigenous cultures with ceramic traditions.

This three stranded plait has served us well as a reference point over the past thirty years and has seen the growth of the collective and the establishment of Māori pottery and ceramic art on the world stage as a ceramic style that is unique to this land.

This exhibition celebrates this growth and our journey to date as the clay whānau – Kaihanga Uku.



Hikoi - Noelle Jakeman

## Rosemary Parcell

3 March 2018 – 29 April 2018  
Opening 5:30pm 2 March 2018

Rosemary Parcell was born in Tarras, Central Otago. In 1972 she graduated from Ilam School of Fine Arts, Canterbury and began teaching Art and Art History in Dunedin and continued with teaching positions in Melbourne, Gisborne and Auckland.

In 2005 she became a full-time painter. A devotee of horse riding and in particular the discipline of dressage, Parcell has often written for Judges at all levels of Dressage events, and finds that this undoubtedly influences her work.

'I have collated a comprehensive collection of works from the last 10 years of the Totemic horse. I focus on the essence, the musculature and movement of the athlete rather than the texture or sheen of coat or even pretty head.

The aesthetic qualities, the sheer beauty of the horse, its arabesques and elegance, even smell, should be evoked. The rider is reduced to hand and seat, for if riding well, the rider should be invisible and the horse appear to move of its own volition.'

- Rosemary Parcell



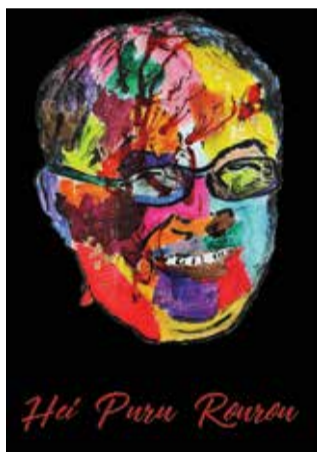
## Hei Puru Rourou Toihoukura

16 December 2017 – 11 February 2018  
Opening 5:30pm 15 December 2017

Toihoukura is the School of Maori Visual Arts and Design at the EIT Campus in Gisborne. Toihoukura is an internationally recognized indigenous art programme offering a Diploma and Bachelors Degree in Māori Visual Arts. Toihoukura provides a model of learning that sets it apart from other institutions. Using both the ideology and practice of learning in a 'wānanga' environment, every student is encouraged to reach their personal and professional potential using traditional concepts to inform contemporary art expression.

The art works in this exhibition have been created by the senior students in the Toihoukura Programme. Each year the graduate with the highest level of achievement in the final year is awarded the Ruanuku Art Award.

The Ruanuku Art Award is sponsored by Dr Jack C Richards, a condition upon receiving the award is that a work once selected is donated by the recipient to the fine arts collection of the Tairāwhiti Museum.



Meng Foon - Catherine August

## Long-term Exhibitions



**Watersheds | Ngā Wai Pupū**  
Encounter famous people, significant events, interesting places and wonderful objects that tell the stories of arrival, survival, struggle and transformation which have shaped Tairāwhiti.

**Te Moana Maritime Gallery**  
Glimpse into 1000 years of maritime myths, legends, stories and development in the Tairāwhiti East Coast region.



**The Star of Canada**  
Explore the two-storied wheel-house and captain's cabin of the Star of Canada, a cargo steamer wrecked on rocks on the Gisborne foreshore on 23 June 1912.



**Wyllie Cottage**  
Visit Wyllie Cottage, the oldest European house still standing in the Gisborne area. Recently restored with new displays.

## Kete-Puāwai -Basket of Evolution

21 December 2017 – 25 February 2018  
Opening 5:30pm 20 December 2017

Māori weaving is full of symbolism and hidden meanings embodied with the spiritual values of Te-whare-pora and our Māori people. The kete is seen and recognised as a spiritual vessel. It carries the knowledge and wisdom of our ancestors. Tāne-te-wānanga is acknowledged for retrieving three baskets of knowledge for mankind. One kete was called Te-kete-aronui, which is known as the basket of progression. Te-kete-aronui contained the knowledge of raranga as well as all things pertaining to the arts.

Puāwai refers to the evolution of Te-whare-pora from the past and to its continuing growth in the present. This exhibition therefore pays tribute to the weavers of the past and to the weavers of the present that continue to revolutionise the knowledge of Te-whare-pora.

In this exhibition kairanga from Te-Wānanga-o-Aotearoa (Whirikoka Campus) will exhibit their work alongside raranga tahito (traditional weaving).

- Erin Rauna



Abby Collier - Tuwhara

## Jack C Richards Decorative Arts Gallery

Our October changeover in the Jack C Richards Decorative Arts Gallery saw new textiles, glass works and framed prints installed in the gallery. Korean wedding gowns were replaced by an array of Chinese and Tibetan robes. A stunning early twentieth century wedding gown is finely embroidered with symbols of riches, honour, love and beauty (phoenix on rockwork surrounded by peony flowers) and joy, happiness in marriage, summer (butterflies). This striking piece is flanked by two richly-decorated court robes which feature dragon motifs representative of the authority of the wearer.

We also installed new hanging textiles – three pieces of fine Iban ikat, fabrics of the Iban people of the Sarawak province of Malaysia, on the island of Borneo. These pieces are prized as the threads used to create the patterns in the woven textiles are dyed before weaving, meaning that creating the patterns desired requires extreme skill.

Mike Pohl is a doctor working in Auckland who recently discovered a love of glass blowing. His pieces are brightly coloured and made with the Murrini roll up technique, an early glass-blowing technique which creates intricate patterns often in many colours.

Six small kimono designs tell part of the story of Japan's rapid modernisation and westernisation in the early twentieth century. These designs strongly reflect Art Deco design principles which were popular in the West at the time.



## Follow My Journey - Phillipa Knight

22 December 2017 – 18 February 2018

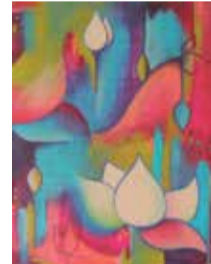
Yearning to paint with expressive freedom, local artist Phillipa Knight, has found her happy place through the process of intuitive painting.

For this artist, intuitive painting is recording onto canvas whatever enters the mind at any given moment. Beginning with applying a background of random colours from a warm pallet, then adding preconceived shapes, pictures or symbols of significance. Finally, the artist lets her intuition dictate the composition and tonal quality of the painting.

Each intuitive painting can be described as dynamic, evolving until the artist reaches a feeling of resolve. Until that stage, colours, composition, even the symbols depicted may change several times.

Knight's love of nature inspires her creativity, a multimedia artist her artistic disciplines include jewellery, ceramics, drawing and painting. Self-taught, her drawing skills developed at a very young age and while recovering from a serious health issue 'creativity' became a major part of her life.

'Life is a journey of self-discovery, of learning and growing each day. I express this through my paintings... follow my journey, I hopes it will inspire yours'



Blossoming

## Company of Potters

17 February 2018 – 15 April 2018  
Opening 5:30pm 16 February 2018

Curated by Damian Skinner, developed and toured by Objectspace.

Between 1973 and 1984, the three kilns at Ian and Sheryl Smail's 'Nodsdale' property on Auckland's north shore were used to fire pots by a number of leading New Zealand ceramists. This exhibition explores the creative and social relations that linked these kilns, the pots fired in them, and the makers closely associated with the Smails; Chester Nealie, Liz Schwier, Warren Tippet, Bronwynne Cornish, Len Castle, Denis O'Connor, Nick Waterson, and the Smails themselves.

The first of the three kilns built at 'Nodsdale' (the Redvale property named for Sheryl's nickname, Nod) was in 1974; a baby oil-fired brick kiln of ten cubic feet, with a single cylinder shearing-shed motor that Ian had repurposed. This kiln was in frequent use and used especially for salt glazing. The second kiln, built in 1975 or 1976, was a stoneware kiln, about 30 cubic feet and replete with vacuum cleaner blowers, the construction of which followed the connection of electricity to the property. The third was a wood-fired kiln completed by 1978.



## Gladstone Road



Gladstone Road, named after British Prime Minister William Ewart Gladstone, has been the main street of Gisborne (Tūranga) since its establishment in the late 1860s. Hotels, banks, retailers, churches, halls, theatres, a post office, a courthouse, a newspaper have all resided on Gladstone Road.

The popularity of Gladstone Road has ensured its capture by way of photography. The museum photographic collection has a good coverage of the central business area over a number of decades. The Gladstone Road exhibition features some of the more interesting images of the road and the buildings associated with it.

In 1975 a photographic survey of Gladstone Road from Reads Quay to Roebuck Road was made by a university student and donated to the museum. A similar survey was made in 1993. Maybe it is time to produce another? The 1975 photographs are 'merged' together resulting in a long continuous view of each side of Gladstone Road that runs along the walls of the photographic gallery.

## Mahunga

Family photographs are one of our greatest personal treasures. The family photo album is the one item people consider they would 'grab' in a fire. We see them as a collection of life's memories rather than an assemblage of images.

The Mahunga Collection depicts the establishment of the Mahunga farm station situated on the Te Wera Road near Matawai. The images transport us to the early 1900s and an insight to family and farming life in an isolated rural environment



On Te Wera Road