



www.tairāwhitimuseum.org.nz

Tairāwhiti MUSEUM
Te Whare Taonga o te Tairāwhiti

Exhibitions, News & Events

Quarterly newsletter of the Tairāwhiti Museum & Art Gallery
Te Whare Taonga o te Tairāwhiti
September 2017 ISSN 117-4975



SHOP

Our shop holds a fabulous range of product to choose from and we continue to add new items. Whether you are looking for a gift, wanting to send something overseas or buy a treat for yourself, there is something for everyone.

We believe there are some wonderful choices for all occasions, so do come and have a look. As always, the museum continues to support local artists including Seymour May, Julia Gould, Hugh Lloyd, Michael Stammers and Christine Page. All purchases at the museum shop provide funding for the museum so not only can you buy a fabulous present, but also support the museum at the same time. Friends of the Museum receive a 10% discount on all purchases (excluding sales).



EXHIBIT CAFE



Great coffee and food, prepared daily, served with a smile. **Exhibit Café** is open for lunches, brunches and morning and afternoon teas. Select from the delicious options on the blackboard menu with gluten free and vegetarian options available. Dine in the sun on wide decks overlooking the park or inside in year round air-conditioned comfort.

Moy Chan and her staff do all the baking on the premises, use predominantly local ingredients and cater to a variety of dietary needs including gluten free options. Exhibit Café offers catering services for meetings, courses and exhibition openings.

10% discount for Friends of the Museum

Opening hours: 10.00am to 2.00pm. Monday to Saturday. Closed Sundays.

EXHIBIT
CAFE

Enquiries contact: Moy Chan at the Tairāwhiti Museum on (06) 867 3832. Mob: 027 415 701. Email: moyzie_exhibit@yahoo.co.nz

Mon. - Sat. 10am-4pm
Sun. 1.30pm-4pm
Stout Street • Gisborne
06 8673832



https://www.facebook.com/tairāwhitiuseumgisborne
https://tairāwhitiuseum.wordpress.com/

Like us on Facebook and follow our blog to keep up to date with stories, events and goings-on at Tairāwhiti Museum.

Great Encounters at the British Museum – free public talk by Tapunga Nepe, Kaitiaki Māori, 26 October 5.30pm at Tairāwhiti Museum

School holiday programmes 2 – 13 October
Full schedule to be announced soon, see Facebook for more information.

Jazz Concert, presented by Poverty Bay Blues Club
2pm 1 Oct David Paquette, International Jazz Pianist
Tickets \$25 available from Tairāwhiti Museum, \$20 (PBBC members)
Sponsored by BDO

Sunday concert series, second Sunday of every month between May and September, 2pm
Adults \$5, Students with ID and children free

2pm 8 Oct Emma Sandford and Joel Baldwin (classical guitar)
With thanks to Professor Jack Richards

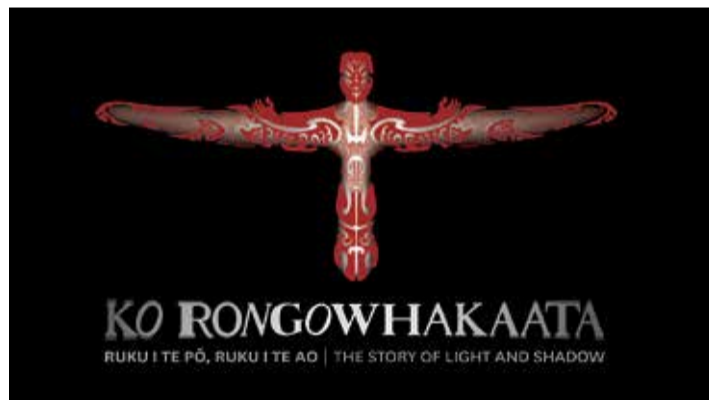
UPCOMING EVENTS

As a friend you can take advantage of free admission to the museum, a 10% discount in the museum shop, Exhibit café and on exhibition purchases, as well as invitations to exhibition previews and exclusive events. Friends also receive a 10% discount off the usual price for art supplies and framing from Personality Framers.

Friends of the Museum provide vital support to our activities – allowing us to purchase works for the collection, run activities and events, and fund projects which help maintain the museum.

BECOME A FRIEND OF THE MUSEUM

MORE EXHIBITIONS



Ko Rongowhakaata
Ruku i te Pō, Ruku i te Ao | The Story of Light and Shadow

Explore the land, people, and stories of the Rongowhakaata iwi in a stunning new exhibition at Te Papa, opening Friday 29 September 2017.

Rongowhakaata and Te Papa have worked together to create **Ko Rongowhakaata: The Story of Light and Shadow**. In this dramatic exhibition, discover awe-inspiring taonga [treasures], innovative contemporary art, and powerful stories of survival and tenacity.

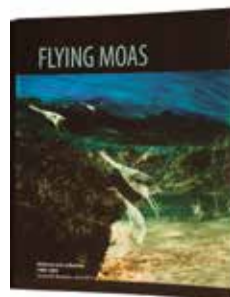
Get to know this small, but enduring iwi from the East Coast of the North Island, whose leaders and creativity have made a big impact across Aotearoa New Zealand. See their renowned whare whakairo [carved house] Te Hau ki Tūranga in a new light – a high point of Rongowhakaata creative expression.

*Kia tū rangatira ai a Rongowhakaata
For Rongowhakaata to stand with dignity*

BOOKS FOR SALE



RECOVERY - Womens' Overseas Service in WW1 by Kay Morris Matthews (published by Tairāwhiti Museum and EIT) – on sale at Tairāwhiti Museum, \$35



FLYING MOAS, publication by Sheridan Gundry that tracks the historical flight path of the Flying Moas, (published by Tairāwhiti Museum – on sale at Tairāwhiti Museum, \$35



Please spread the word about free admission and encourage your friends and family to come along and see what we have on offer – there are lots of interesting exhibitions, with a particular focus on historic and contemporary work by local artists coming up over the next few months.

One of our staff members, Kaitiaki Māori Tapunga Nepe, has recently returned home brimming with ideas for the museum after taking part in a six-week internship for an international cohort of museum professionals based at the British Museum. Tapunga was the first New Zealander to be invited to take part in this programme, he shares some of his experiences and reflections on global museum practice in this newsletter and will also be giving a free public talk on 26 October.

We were pleased to again receive very positive feedback in the latest Gisborne District Council residents' satisfaction survey, with a 97% satisfaction rating from those who had visited recently. Upgrades to our facilities, exhibitions and services continue and as always we welcome your feedback to ensure we are meeting the needs of our regular patrons, and making the museum warm and welcoming to first-time visitors.

As just one example of the generosity of our community over the past financial year - of the 317 new items added to the museum collection, 96% were gifts. The remainder were purchased by the Friends of the Museum, or found in one of our local charity shops.

In the past most of the museum's admissions income (about 80%) has been received from domestic (45%) and international (12%) visitors. We are retaining this charge, as it is an important income stream, but like many other museums in New Zealand, we felt it was appropriate to remove the charge for Tairāwhiti residents – particularly as it is you who support our community museum in so many ways – as ratepayers, artists, volunteers and donors.

We've been able to make this change thanks to strong local support for the museum shop, café and other revenue-generating activities. We are particularly grateful to the Friends of the Museum for their ongoing support of museum activities and Gisborne District Council, for their support of this initiative.

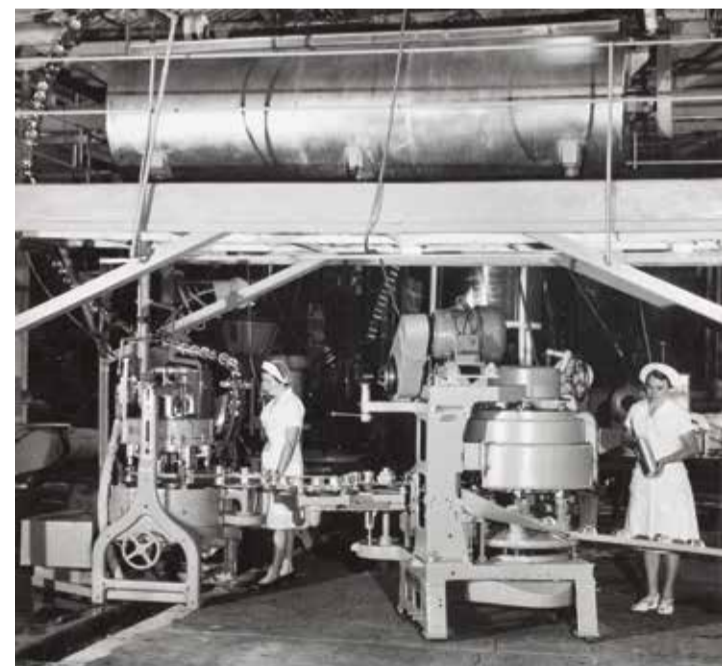
In July this year, the museum removed the entry charge for Tairāwhiti residents. With this change, we hope to make the museum, and the cultural treasures of our region held within, more accessible to everyone in our communities.

FROM THE DIRECTOR

MORE EXHIBITIONS

Planning for a new exhibition displaying photographs from the museum collection is well underway. *Posing, Not Posing* will replace the popular *Gladstone Road* exhibition. Be sure to come in for your last look at the fabulous 1975 panorama of Gladstone Road.

Posing, Not Posing provides an opportunity to study how we see ourselves through the camera lens. Over 100 images will demonstrate the variety of techniques of portraiture in the studio, at home, at work and at play.



A late 1960s picture propounds the glamour of the Watties canning machine. 228.2-115



EXHIBITIONS AND EVENTS : September 2017 - November 2017

100 Days Show - Gisborne

24 June 2017 – 10 December 2017

Founded in 2011 the 100 Days Project is an annual event that runs, (you guessed it!), for 100 consecutive days. The brainchild of this project, New Zealand graphic designer Emma Rogan, says, 'in order to survive this 100 day marathon you need to be disciplined, have creative flexibility and lots and lots of energy.' Other than two simple rules - choose one creative activity to repeat every day for 100 days, and record each daily effort - there is no skill pre-requisite, no age restriction, no fees and you can participate from anywhere in the world.

100 Days Show - Gisborne sees eight artists from this region and their projects from 2016, with some artists adding works from previous years' 100-day projects. The show kicks off with a group exhibition, followed by solo exhibitions by each individual artist. For some exhibitors workshops for children and in-gallery art demonstrations may accompany these exhibitions.

-Lina Marsh



100 Days Show - Gisborne

24 June 2017 – 10 December 2017

Solo Exhibitions:

Jo Tito
@wonderingearth
20 September - 8 October

Sarah Kane-Matete
100 contemporary tattoo designs
11 October - 29 October

Julia Hennessy
Myopia
1 November - 19 November

Lina Marsh
100 Hei Tiki + 100 Songs
22 November - 10 December



Day 18: Hei Tiki Two Bit Punk From Frisco. Song of the Day: Ramones, 'Beat on the Brat'. Album: Ramones, 1976. Lina Marsh 2016

MŌ TE EMEPAEA - For the Empire A diary of WW1

13 October 2017 – 10 December 2017
Opening 5.30pm 12 October

Ki a koutou Ngāi Mātakitaki tēnā koutou katoa. Tēnā koutou i tae mai ki te mātakitaki i tēnei mahi toi i runga i te kaupapa o te pakanga tuatahi. Ko te tumanako kia mīharo koutou ki ngā mahi toi o ngā tohunga nā rātou ngā peita, ngā whakairo, me ngā taonga uku i roto i tenei whakakitenga me te aroha anō hoki ki a rātou katoa i haere ki rāwāhi ki te pakanga tuatahi. Tēnā koutou, tēnā koutou, tēnā koutou katoa.

"Mō Te Emepeae" (For The Empire) is a play on Lord Kitchener's finger pointing to members of the Commonwealth that "Your Country Needs You".

This is a personal exhibition based in part on the diaries of Tawhai Riri Tamepo which contains the activities of his platoon and his travels in Europe while on convalescent leave.

Tamepo paints a sobering portrayal of the post war struggles that many endured without governmental assistance which was only available to non-Māori returned servicemen.

Contributing to this memorial are artists: June Grant, Jean Stewart, the late Dr Cliff Whiting, Sandy Adsett, Derek Lardelli, Gabrielle Belz, Steve Gibbs, Baye Riddell, Grant Hall, Ruth Cole, Linda Pirimona, Hoana Forrester and Ereatara Tamepo.

-Curator Erina Tamepo



Artist Jean Stewart works on 'Night Trek in Killarney'

TE HĀ ART AWARD and EXHIBITION 2017 'The impact of settlement upon the native flora and fauna of Te Tairāwhiti'

7 October 2017 – 3 December 2017
Opening 5.30pm 6 October

Presented by Tairāwhiti Museum and Te Hā 1769 Sestercentennial Trust

In October 2019 our region and nation will commemorate the 250th anniversary of the first meetings of tangata whenua and those on the Endeavour, which took place here in Te Tairāwhiti. This significant event encourages us to consider our region's unique and fascinating heritage.

2017 is the second year of TE HĀ ART AWARD and EXHIBITION. Entry is free and this year's theme questions what effects Māori and European settlement have had on Aotearoa's distinctive flora and fauna.

Artists are encouraged to explore any avenue of thought which incorporates this 'seasons' topic. From the ongoing benefits of preservation and conservation, to the extreme past and present predatory activities which have decimated so many species.

Sponsors Pultron Composites, offers prizes for the open \$3000 and youth \$500 sections and this year Dr Jack C Richards presents a further two awards for Highly Commended \$1500 and People's Choice \$1000.



Lina Marsh - Kowhai Leaf 2013.02.10

Long-term Exhibitions



Watersheds | Ngā Wai Pupū
Encounter famous people, significant events, interesting places and wonderful objects that tell the stories of arrival, survival, struggle and transformation which have shaped Tairāwhiti.

Te Moana Maritime Gallery
Glimpse into 1000 years of maritime myths, legends, stories and development in the Tairāwhiti East Coast region.



The Star of Canada
Explore the two-storied wheel-house and captain's cabin of the Star of Canada, a cargo steamer wrecked on rocks on the Gisborne foreshore on 23 June 1912.



Wyllie Cottage
Visit Wyllie Cottage, the oldest European house still standing in the Gisborne area. Recently restored with new displays.

Water is Life - He Ora Te Wai Our stories of our Tairāwhiti waters

20 September 2017 – 26 November 2017

Water. Essential for life. What does it mean to you? What are your memories and stories of water? How can we protect our waterways?

'An opportunity for the people of Tairāwhiti to come together to share our stories of our wai, our waters, in our own way. Sharing our love and concerns for water through all forms of art... dance, poetry, clay, weaving, carving, painting, drawing, photography, sculpture, slide shows. We invite all to join us, to bring a small sample of water from your rivers, lakes or streams to place in a collective vessel, and consider what we can do to care for our waters which sustain our lives.'

- Airini Forbes



Protest Sign

Kete-Pūāwai -Basket of Evolution

21 December 2017 – 25 February 2018
Opening 5:30pm 20 December

Māori weaving is full of symbolism and hidden meanings. Embodied with the spiritual values of Te-whare-pora and our Māori people. The Kete is seen and recognised as a spiritual vessel. It carries the knowledge and wisdom of our Ancestors. Tāne-te-wānanga is acknowledged for retrieving three baskets of knowledge for mankind. One kete was called Te-kete-aronui, which is known as the basket of progression. Te-kete-aronui contained the knowledge of raranga as well as all things pertaining to the arts.

Pūāwai refers to the evolution of Te-whare-pora from the past and to its continuing growth in the present. This exhibition therefore pays tribute to the weavers of the past and to the weavers of the present that continue to revolutionise the Knowledge of Te-whare-pora.

A connection of Te-whare-pora from the past and Te-whare-pora of the present. The kairaranga are a selection of students from Te-Wānanga-o-Aotearoa (Whirikoka Campus) to exhibit taonga raranga alongside Raranga tahito.

- Erin Rauna



Abby Collier - Tuwhara

British Museum's International Training Programme 2017

An array of great encounters transpired from the British Museum's International Training Programme 2017, of which I was very fortunate to take part in and experience. Twenty-five museum and heritage members from around the world came together and participated in this amazing global networking programme. Participating countries this year included Armenia, China, Egypt, Greece, Guatemala (new for 2017), India, Indonesia (new for 2017), Iran, Lesotho (new for 2017), Malaysia, Myanmar (new for 2017), Nigeria, Pakistan, Palestine, Sudan, Turkey, Zimbabwe (new for 2017) and New Zealand (new for 2017).

Over the course of six weeks, we shared information through a mixture of presentations, hands-on workshops, panel discussions, group projects and covered a full range of museum activities from exhibitions and security to conservation and staff engagement. We also spent time with relevant departments, where we could focus in on areas of interests and meet with the British Museum's extensive collections. We also spent 10 days at another UK partner museum. I was located with three other ITP members in Manchester where we visited and met with museum professionals from Manchester Art Gallery, Peoples History Museum, Manchester Museum and Whitworth Art Gallery. Other museums during my visit in the UK also included, Cambridge Museum, Brighton Museum and Art Gallery, Horniman Museum and Gardens, and others.

As part of the programme, we worked in partnership to plan and propose a temporary display using taonga from the British Museum's collection, drawing on existing experiences, knowledge of our own culture, and relevant skills acquired during the programme. This was a great opportunity for us to exchange cultural knowledge, and to explore and identify parallel aspects from each other's culture. This was one of the highlights that I encountered, meeting with and interacting with different cultures. Alongside meeting our taonga and the people and museums that care for them.

- Tapunga Nepe, Kaitiaki Māori



Erratum
The Museum apologises to the Artstuff Collective for the failure to obtain due copyright consent for and proper acknowledgement of the reproduction on the title page of Sheridan Gundry's recent Flying Moas publication.

Jack C Richards Decorative Arts Gallery

Recently we changed four cases in the Jack C Richards Decorative Arts Gallery. Two new selections of Lalique glassware have been brought into the museum, the first with a black and white theme, the second with a nature theme. Rene Jules Lalique (1860-1945) was a French designer and artist. Although Lalique was initially recognised for his jewellery designs, by the 1920s he was internationally recognised for his art nouveau and later art deco glass works.

Three vases by Elizabeth McLure also feature in the July changeover. Elizabeth McClure is a Scottish/New Zealand artist who is recognised for her significant contribution to contemporary glass art. In these three vessels the artist makes her mark on each vase by using a number of different processes and tools, among them painting and enamelling, engraving and cutting using stone and diamond wheels, sandblasting, hand and machine grinding, polishing and finishing. In this way each of her works is entirely unique, with its own individual inscriptions.

We also added four contemporary Korean ceramic tigers to the gallery. These brightly painted and highly patterned tigers make a colourful display. Though tigers are ferocious and wild, in Korean culture they are often portrayed as friendly and funny animals. They are seen as an omen for good luck so are often represented in Korean art and material culture.



Gladstone Road



Gladstone Road, named after British Prime Minister William Ewart Gladstone, has been the main street of Gisborne (Tūranga) since its establishment in the late 1860s. Hotels, banks, retailers, churches, halls, theatres, a post office, a courthouse, a newspaper have all resided on Gladstone Road.

The popularity of Gladstone Road has ensured its capture by way of photography. The museum photographic collection has a good coverage of the central business area over a number of decades. The Gladstone Road exhibition features some of the more interesting images of the road and the buildings associated with it.

In 1975 a photographic survey of Gladstone Road from Reads Quay to Roebuck Road was made by a university student and donated to the museum. A similar survey was made in 1993. Maybe it is time to produce another? The 1975 photographs will be 'merged' together resulting in a long continuous view of each side of Gladstone that runs along the walls of the photographic gallery.

Intervention Series John Roy

Tauranga based artist John Roy is noted for his highly decorative, figurative ceramics. His current touring 'intervention series' are wall-based installations which occupy spaces in unexpected ways.

'I see interventions as an interesting way of creating dialogues with gallery space, how we look at the space. These ceramic works act as colourful abstract patterns creeping across the wall or lurking in corners. In this way the installation has multiple interpretations depending on personal experiences.'



Exile

Mahunga

Family photographs are one of our greatest personal treasures. The family photo album is the one item people consider they would 'grab' in a fire. We see them as a collection of life's memories rather than an assemblage of images.

The Mahunga Collection depicts the establishment of the Mahunga farm station situated on the Te Wera Road near Matawai. The images transport us to the early 1900s and an insight to family and farming life in an isolated rural environment



Mahunga