

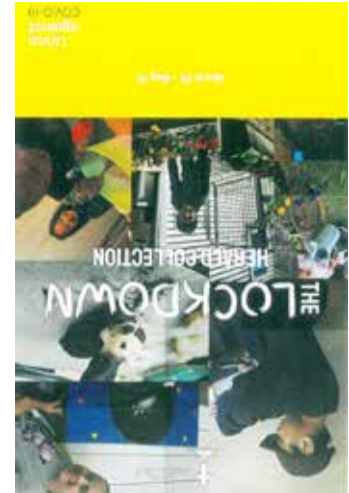
Visit our website for up to date information on Covid-19 procedures at the museum
<https://tairawhitimuseum.org.nz/visit/covid-19-response/>

Please do not visit if you are sick and follow staff instructions and signage.

can operate safely as a public venue.

The museum is open with additional public health measures in place to ensure we

Covid-19 update



Our special thanks go to everyone in the community who has donated an item to the museum collection this year. It would not be possible to do this work without your generosity and support. We look forward to seeing you at the museum soon.

-Eloise Wallace

Objects do not always need to be 'old'! An important part of our work is collecting items related to significant current events so that we can play our part in ensuring our stories and memories are passed down to future generations. The Covid-19 pandemic has had a major impact on Tairāwhiti this year and we want to ensure that this event is represented in the museum's collections so future generations will be able to understand the impact of the global pandemic on our daily life. One of the objects we have collected so far this year in relation to Covid-19 is a face shield made by a resident on his 3D printer for Hauora Tairāwhiti for health workers. Another is 'The Lockdown Herald' a special newspaper published by staff and students at Sonrise Christian School during lockdown.

If you have any objects, documents (such as letters, drawings or diaries), or photographs related to the response in our community to Covid-19, be it within your whānau, or in a community organisation or business - please do get in touch with us. We are keen to understand what everyday objects represent your experience of Covid-19. We have more information on our website about our collection development process and policies and are very happy for you to call and speak to a member of our collections and curatorial team.

FROM THE DIRECTOR

While we are adapting our public-facing services, events and programmes in response to changes in COVID-19 alert levels, the work the museum team undertakes to care for and develop the museum collection has fortunately been able to continue largely uninterrupted this year.

BorrowBox eBook titles compliment the range available through Libby and offer the same practical benefits;

- Lighter than physical books so easier for some people to hold.
- Back light function offers option to read comfortably at night.
- The ability to increase font size means that any title from the main collection can be 'Large Print'.
- In addition all BorrowBox eBooks can be converted into dyslexic font.

However eAudiobooks are the main point of difference with BorrowBox as they have exclusive rights to authors such as James Patterson, Lee Child and Philippa Gregory. In addition to New Zealand authors like Deborah Challinor, Fiona Kidman and Witi Ihimaera to name a few.

Listening to eAudiobooks is the fastest growing literary trend worldwide. This format is popular for many reasons including the fact that:

- You can multitask while you are listening, for instance while you are gardening, exercising or driving.
- Commuters and truck drivers are large consumers of eAudiobooks. It has been proven that listening to stories keeps drivers more alert than listening to music.
- Listening to stories is also a way to engage reluctant readers. It exposes them to stories and builds vocabulary and an appreciation for words.

Notably there has been an increased interest in books about self-improvement and physical and mental health since COVID-19. Libby and BorrowBox offer a wide selection of such titles. Among which are some great choices for those of us seeking to grow and accept change.

Take care. Be kind to yourselves.
 - Lois Haddon - Library Service Leader



Tairāwhiti MUSEUM
 Te Whare Taonga o te Tairāwhiti
 Stout Street • Gisborne
 Mon. - Sat. 10am-4pm
 Sun. 1.30pm-4pm
 06 8673832



Review us on TripAdvisor
 Tairāwhiti Museum
 @Tairawhiti_muse
 tairawhiti_museum #tairawhitimuseum
 @tairawhitimuseumgisborne
 www.tairawhitimuseum.org.nz

CONNECT AND SHARE WITH US ONLINE

At the time of printing most events, openings and public programmes are postponed due to Level 2 restrictions. Please visit our website or follow us on Facebook for the latest information as we will be able to recommence our events programme as Covid-19 response guidelines change.

UPCOMING EVENTS

Annual membership is \$30 (individual), \$40 (family) and \$100 (business). Please visit our website or ask at reception for more information or to join.

Friends of the Museum receive a 10% discount in the museum shop and at Exhibit Café as well as on photographic prints and purchases of art works from selling exhibitions. Friends also receive a copy of the quarterly newsletter in the post. Invitations to exhibition previews and exclusive events and a 10% discount off the usual price for framing from Personality Framers.

BECOME A FRIEND OF THE MUSEUM

Friends of Tairāwhiti Museum provide vital support to our activities – allowing us to purchase works for the collection, run activities and events, and fund projects which help maintain the museum. As a friend you are helping us ensure the museum stays a vibrant and exciting place to visit.

H B WILLIAMS MEMORIAL LIBRARY

"Change is one thing. Acceptance is another."

This quote from The God of Small Things by Arundhati Roy came to mind when the country moved down from Level 3 and started to open up again.

HB Williams Memorial Library re-opened to the public on the 18th May 2020. Although at Level 2 there were reduced levels of service the response of those coming through the doors was overwhelmingly positive. The library team were excited to welcome back familiar faces as well as an influx of new members.

This included older members of the community keen to register for the first time. With the pragmatism of age they were motivated to utilise the online collections that the library offers to be better prepared should a lockdown situation occur again. The pandemic has effectively been a watershed event for many people in regard to their willingness to utilise technology. Specifically as it relates to ensuring that they can stay connected and have their day to day needs met.

Internationally there were similar spikes in interest in eBooks as people couldn't access physical books. Our members certainly took the opportunity to utilise the eBooks and eAudiobooks offered through the Libby app.



In order to meet the growing demand for eBooks and eAudiobooks BorrowBox was recently added to the libraries' digital platform.

Tairāwhiti MUSEUM
 Te Whare Taonga o te Tairāwhiti
 Stout Street • Gisborne
 Mon. - Sat. 10am-4pm
 Sun. 1.30pm-4pm
 06 8673832
 www.tairawhitimuseum.org.nz

Places and Faces Exhibition



Exhibitions, News & Events
 Te Whare Taonga o te Tairāwhiti
 Quarterly newsletter of the Tairāwhiti Museum & Art Gallery
 September 2020 ISSN 117-5890



SHOP

Our shop holds a fabulous range of product to choose from and we continue to add new items. Whether you are looking for a gift, wanting to send something overseas or buy a treat for yourself, there is something for everyone.

We believe there are some wonderful choices for all occasions, so do come and have a look. As always, the museum continues to support local artists including Seymour May, Julia Gould and Michael Stammers. All purchases at the museum shop provide funding for the museum so not only can you buy a fabulous present, but also support the museum at the same time. Friends of the Museum receive a 10% discount on all purchases (excluding sales).



You can now purchase museum publications from our new online shop.
www.tairawhitimuseum.org.nz

EXHIBIT CAFE



Great coffee and food, prepared daily. **Exhibit Cafe** is open for morning tea and lunch. Fresh and seasonal counter food or the blackboard menu. Gluten free and vegetarian options also available on request. Enjoy the sun on the deck with views of the river & park, or inside all year round in air-conditioned comfort.

Eugenie and her staff bake on the premises using predominantly local produce. **Exhibit Cafe** also offers catering services.

10% discount for Friends of the Museum

Winter opening hours: 9.30am to 1.00pm Monday to Friday, closed weekends.



Enquiries contact: Eugenie Dervin at Tairāwhiti Museum on (06) 867 3832. Mob: 021 222 7012. www.tairawhitimuseum.org.nz Facebook @ExhibitCafe

EXHIBITIONS AND EVENTS : September 2020 - November 2020

Tū te Whaihanga A recognition of creative genius

7 October 2019 – 2021

Sacred taonga that left the shores of Te Tairāwhiti 250 years ago have returned home for an exhibition at Tairāwhiti Museum.

Tū te Whaihanga is the result of the determination by Tairāwhiti iwi for the taonga to return to reconnect with their descendants, to reclaim the knowledge they hold, and to sustain their legacy.

The 37 taonga in *Tū te Whaihanga* include some of those which left on board the HMS Endeavour, after its first voyage to Aotearoa in October 1769. The taonga include eight painted hoe paddles, traded and gifted at sea off Whareongaonga (south of Tūranganui-a-Kiwa) on October 12, 1769, and te poupou o Hinematiaro from her whare on Te Pourewa Island on October 28, 1769. Other taonga include rākau (weapons), kākahu (cloaks), tātua (belts), whakairo (carvings) and adornments.



Rei-puta whale-tooth necklace.
Great North Museum Hancock

Pō! Pō! Nikora Tori Te Kahu and Rangimarie Makowharemahihi-Pahi

11 July 2020 – 6 September 2020

Pō! Pō! seeks to address the seriousness of mental health issues amongst Māori with a particular focus on the causes and effects for Māori women. We, as women, are the ūkaipō, the nurturing element for all – yet - where is our sanctuary? Here we aim to provide a space for self healing and reflection.

Pō! Pō! acknowledges pōuri (sorrow), as we have come to know it, through generations of memories. Memories that speak of times when we had full knowledge of ourselves, of colonization, of war... and memories of ourselves in real-time as Māori.

Through mōteatea (chants), karakia (prayer) and the retracing of whakapapa (genealogy) we have found a doorway that enables us to understand and appreciate the past, as well as this new pōuri (sorrow) that we are feeling. Experience a sense of comfort... or discomfort within our installation of painting, sculpture and sound we aim to inspire a sense of enlightenment and well-being through a shared acknowledgement of pain.

-Nikora Tori Te Kahu



Landscapes Pru Davis

8 August 2020 – 20 September 2020

East coast artist Pru Davies was born to paint and has the ability to turn her hand to any medium she fancies. An llam Fine Arts graduate, her artistic sensibilities nurtured and encouraged from the cradle to the healthy obsession of today. As a descendent of prominent 19th century artist Kennett Watkins, Davis' family ancestry is criss-crossed with artists from one generation to another.

'My latest exhibition of landscapes is based on the immediate and localised environment where I have lived for many years. These areas are all special places that I know and love, and I strive to capture some of the wild, rugged and beautiful energy that exists here. Featured in some of these works is the connective qualities between the natural and spiritual world that I see everyday and have endeavoured to capture on canvas.'



Beloved Horoera

Gisborne Artists, Potters and Photographers Annual Exhibition

29 August 2020 – 10 November 2020

This year has been an unprecedented one. The worldwide pandemic and lock-down has for many artists put an end to that perpetual complaint, "I never have time!" and our annual exhibition will be a fabulous opportunity to view how Gisborne creatives have channelled this experience. A variety of mediums will be on show so something for everyone to enjoy. Joining the Gisborne Artists' Society and the Gisborne Pottery Group again this year is the Gisborne Camera Club.

As always visitors will have the opportunity to purchase artworks in the annual show. When you support handmade you are not just supporting a person, small business, family, our economy, you are purchasing a small part of an artist's heart.

If you'd like to find out more about joining any of the exhibiting organisations you can find them on Facebook.

-Norman Maclean
President Gisborne Artists' Society



Growing Urge
Norman Maclean

Te Hono Wai – Where waters meet Jo Torr

12 September 2020 – 6 December 2020
Opens 11 September 2020, 5:30pm

Five of the artworks highlight the experiences of Tuai and Titere, two young Māori chiefs who travelled to England in 1818. These works draw attention to the way Māori travelled the world prior to the signing of the Treaty of Waitangi seeking new knowledge, useful goods and technologies, while simultaneously sharing their own knowledge to assist in the formulation of a Māori/English grammar. It was thought both Maori and English peoples would benefit from the exchange.

Tuai and Titere were sponsored by Rev. Samuel Marsden to travel to England where they were hosted by members of the Church Missionary Society. Their visit was documented through portraits, by letters the pair sent home and from contemporary European eyewitness accounts, both before and after the visit.

Samual Marsden was also instrumental in bringing missionaries to the Bay of Islands in 1814. The sixth work responds to an incident where textiles played an important part in cultural transactions.



He Tūtakitaki

Pieces of You From the Museum Fine Arts Collection

26 September 2020 - 22 November 2020

Pieces of You is the title of a small mixed media work on canvas by artist Barbara Emery and is the hero image that highlights this suite of works perfectly. A jewellery box with many compartments loaded with life effusing light, colourful secrets, dark desires, passionate thoughts and honourable intentions

The majority of these works are drawn from a cache of artists who have or have had a connection with the local art community at some point in their art careers. This exclusive collective of art purveyors is measured across a causeway of emerging starlets to inspirational and nurturing mentors. Each group is invariably socially committed, whilst working from within their own art bubbles, to the perpetuation of an unending cycle of artistic proclivities.

Pieces of You may make references to the physicality of a portrait, the outer layers and textural toning. It could equally refer to the patina or residue of thought an important equation in the physical make up of an artwork.



Pieces of You
Barbara Emery

Tātara e maru ana The sacred rain cape of Waiapu Natalie Robertson

7 November 2020 – 31 January 2021
Opens 6 November 2020, 5:30pm

Centuries ago, Tamokai of the inland Te Aowera people spoke to his kinsman Kōkore and said: "Hoake tāua ki te Waiapu tātara e maru ana—"Let us go to Waiapu, where the rain cape is thick." With its reference to a woven rain cape, usually made of harakeke, this Ngāti Porou whakataūāki speaks of the shelter provided by the forested Waiapu valley. Today, her 'rain cape' is now threadbare due to deforestation more than a century ago. In response, Ngāti Porou have set forth the vision to revitalise Waiapu Kōkā Hūhua. This exhibition offers a record of an ancestral tipuna landscape as it is today. Hope comes in the form of a red-tipped dawn—te atā kura.

Natalie Robertson is a senior lecturer at the Auckland University of Technology, she makes photographic and moving images that relate to indigenous practices and relationships to the land.

Each year, Natalie returns to whānau land at Omaewa, to strengthen her ties to the whenua. Omaewa, is just north of Port Awanui, family land belonging to Robertson, a member of Te Whānau a Hineautā, Te Whānau a Pōkai. This frequent returning rebuilds old family connections and relationships and deepens her knowledge of place.

Robertson has exhibited extensively throughout New Zealand and internationally. She is also a founding member of the Auckland-based collective Local Time, which facilitates site-specific projects that speak to local and indigenous contexts.



Hikurangi, red tipped dawn

Tokorau

28 November 2020 - 31 January 2021
Opens 27 November 2020, 5:30pm

Tairāwhiti Museum continues its long relationship with highly respected local art school Toihoukura and this year presents *Tokorau*, an exhibition of new works showcasing Toihoukura's emerging Māori artists supported by staff.

Up to 30 students and staff of Toihoukura will exhibit works and stories created during these unprecedented times of COVID-19 2020. Although 2020 has been an uncertain and unstable year it has also been an exciting time for creatives forced out of their comfort zones to produce some of Toihoukura's most powerful work to date.

These new works, acknowledge and celebrate a tough year had by all and offers hope and direction in this new world we live in.

The Toihoukura students are from Certificate Year 1, Degree Years 1-3, Honours and Masters programs. Current tutors are Steve Gibbs, Erena Koopu, Makarini Solomon, Ayson Lewis, Melanie Baldwin, Ngaire Tuhua and Denise Te Hau.

Featured artist is the esteemed Tā Derek Arana Te Ahi Lardelli KNZM widely respected as a tāmoko artist, painter, carver, kapa haka performer, composer, researcher and kaikōrero.



Rereao!
Michelle Kerr

Places and Faces

Fred Foster found a way to make a dollar. Well pre-decimal pounds actually. His plan was to learn how to use a camera and make photographs. That accomplished he took his camera and his sale like charms to his neighbourhood. Knocking on the doors of homes, many newly built, he would talk the lady of the house into have her and her family photographed in front of their home.

This exhibition displays the results of those whom posed for Foster in the early 1900s.



Posing, Not Posing

Photographs are for sharing and people have always wanted to look their best.

By taking a look back through the museum's collection in *Posing, Not Posing*, we not only seek to understand the history of portrait photography but understand how we present and see ourselves.



Lionel Sherriff

Long-term Exhibitions



Watersheds | Ngā Wai Pupū
Encounter famous people, significant events, interesting places and wonderful objects that tell the stories of arrival, survival, struggle and transformation which have shaped Tairāwhiti.

Te Moana Maritime Gallery
Glimpse into 1000 years of maritime myths, legends, stories and development in the Tairāwhiti East Coast region.



The Star of Canada

Explore the two-storied wheel-house and captain's cabin of the Star of Canada, a cargo steamer wrecked on rocks on the Gisborne foreshore on 23 June 1912.



Willie Cottage

Visit Willie Cottage, the oldest European house still standing in the Gisborne area. Recently restored with new displays.

Jack C Richards Decorative Arts Gallery

A recent refresh of the gallery includes two kimono and three Javanese batik from the Jack C Richards collection, and a complete changeover within the curiosity cabinet, featuring a playful take on all things bird related. This includes a collection of sculptures of foreign birds, interspersed with items from our indigenous bird species, the tūi, kiwi, and the moa, from eggs to a method of their consumption, from prose to play.

Of particular note within the cabinet is a tūi from the museum's Natural History collection, mounted by the late Vic Davy (1915-2004), the owner of Davy hairdressing saloon in Gladstone Road in the 1960s and 70s where a collection of his taxidermy animals were displayed in the window. Accompanying the tūi is the book *Kowhai Blossoms* by the late Mary Ramsay Ellen Blair (1875-1963) of Gisborne. The kōwhai flower is a food source from which many indigenous birds benefit.

Two bird sculptures made from semi-precious stones from the Jack C Richards collection play homage to the nearby stone sculptures of John Edgar, Korean wedding birds (Mandarin ducks) sit next to a ceramic-lidded bowl featuring a duck from the Ming dynasty, and resin cast parrots sit atop perches.

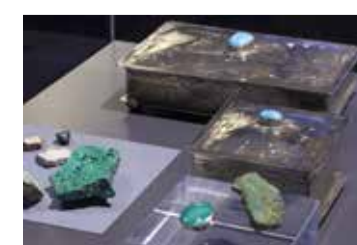
Also on display is a silver egg cruet used to serve and consume boiled eggs, reputedly from the Star of Canada, moa egg fragments from the Makarori sand hills, and lead toy birds from the 1930s. Kids look out for the creature lurking in the bottom right hand corner amongst all the toy ducks, geese and chooks!



Kimono
Japan c.1930s



Tūi and Kowhai Blossoms



Silver boxes with turquoise stones