



**Exhibitions, News & Events**  
 Quarterly newsletter of the Tairāwhiti Museum & Art Gallery  
 Te Whare Taonga o te Tairāwhiti  
 December 2021 ISSN 1117-5890

**SHOP**

Our shop holds a fabulous range of product to choose from and we continue to add new items. Whether you are looking for a gift, wanting to send something overseas or buy a treat for yourself, there is something for everyone.

We believe there are some wonderful choices for all occasions, so do come and have a look. As always, the museum continues to support local artists including Seymour May, Julia Gould and Michael Stammers. All purchases at the museum shop provide funding for the museum so not only can you buy a fabulous present, but also support the museum at the same time. Friends of the Museum receive a 10% discount on all purchases (excluding sales).



You can now purchase museum publications from our new online shop. [www.tairawhitimuseum.org.nz](http://www.tairawhitimuseum.org.nz)

**EXHIBIT CAFE**



Great coffee and food, prepared daily. **Exhibit Cafe** is open for morning tea and lunch. Fresh and seasonal counter food or the blackboard menu. Gluten free and vegetarian options also available on request. Enjoy the sun on the deck with views of the river & park, or inside all year round in air-conditioned comfort.

Eugenie and her staff bake on the premises using predominantly local produce. **Exhibit Cafe** also offers catering services.

10% discount for Friends of the Museum  
 Opening hours: 9.00am to 2.00pm Monday to Friday  
 Closed weekends during winter.

Enquiries contact: Eugenie Dervin at Tairāwhiti Museum on (06) 867 3832. Mob: 021 222 7012. [www.tairawhitimuseum.org.nz](http://www.tairawhitimuseum.org.nz) Facebook @ExhibitCafe

Te Whare Taonga o te Tairāwhiti  
**MUSEUM**  
 Stout Street • Gisborne  
 Mon. - Sat. 10am-4pm  
 Sun. 1.30pm-4pm  
 06 8673832

Spade Oak VINEYARD  
 SUNSHINE BREWERY  
 Thank you to our exhibition preview sponsors  
 Search the museum collection online [www.collection.tairawhitimuseum.org.nz/explore](http://www.collection.tairawhitimuseum.org.nz/explore)  
 Review us on Tripadvisor  
 @Tairawhitimuseumgibsonne  
 Tairāwhiti Museum  
 www.tairawhitimuseum.org.nz

**CONNECT AND SHARE WITH US ONLINE**

Any donation you make will be invested, protected and grown each year, with surpluses investment income granted back to the museum annually. If you would like more information call Glenda at the Sunrise Foundation 06 867 7939 or visit [www.sunrisefoundation.org.nz](http://www.sunrisefoundation.org.nz) or [www.tairawhitimuseum.org.nz](http://www.tairawhitimuseum.org.nz)

Tairāwhiti Museum has recently established an endowment fund with The Sunrise Foundation to support collection development and care. We are grateful to Michael and Ann Muir for making a donation to establish the fund; and to Les McGreevy, who when he passed away in 2019 left a generous bequest to the museum which has now also been transferred to the fund.

**Tairāwhiti Museum Endowment Fund**

**LEAVE A LASTING LEGACY**

Please sign up to our e-news, check our website or follow us on our social media pages for the most up-to-date information on museum events.

**UPCOMING EVENTS**

**H B WILLIAMS MEMORIAL LIBRARY**

In this constantly changing world it is essential to enhance and add new skills at a rate not seen before. We are very excited to now be offering LinkedIn Learning to our patrons. This platform is extremely clever as it creates skills based learning recommendations that are focused directly on you in the comfort of your home. This can also aid in upskilling your employees.

Over the last few years of unprecedented times we have worked from home and may have been given the option to look into professional development. LinkedIn Learning is the perfect place to do it. Some of the skills that you can build on right now with LinkedIn Learning are in extremely high demand. Other skills will never go out of style. So take your pick: increase your value and do more of what you're already doing at a higher level, or reinvent yourself to blaze a new career path.

As we all evolve amidst these rapidly changing times, opportunity is just one click away.

With access to linkedIn learning with your HB Williams Memorial Library card you are free to pick and choose from the thousand of focused learning possibilities.



**DID YOU KNOW?**  
 LinkedIn Learning is now accessible using your HB Williams Memorial Library account.  
 gpl.govt.nz  
 UnknedIn Learning (formerly Lynda.com) offers over 16,000 video courses on subjects relating to business, creativity, and technology.  
 LinkedIn Learning Library

-Eloise Wallace  
 Director

We wish you a very Merry Christmas and New Year and a wonderful summer ahead, and we look forward to seeing you at the museum.

of the year.  
 our exhibition preview sponsors Sunshine Brewery and Spade Oak over the course  
 Zealand Lottery Grants Board, Clark Charitable Trust, Professor Jack Richards and  
 support received from the Friends of Tairāwhiti Museum, Trust Tairāwhiti, the New  
 have with Gisborne District Council and the Ministry of Education, as well as the  
 earned income (admissions, retail etc) and we are grateful for the partnerships we  
 Despite the impact of Covid-19 on our operations we were able to increase our  
 written by Jean Johnston was another highlight.  
 support received from the Friends of Tairāwhiti Museum, Trust Tairāwhiti, the New  
 achievement and making much of our collection accessible digitally was a significant  
 acquisitions gifted by the community. Launching our Collections Online  
 The museum collection continued to develop, with 98% of our 296 new

here at home longer than originally planned.  
 extended until May 2022, and we are delighted the taonga have been able to stay  
 The exhibition *Tu te Whāhanga: a recognition of creative genius* has now been

expertize and talent.  
 to work with Tairāwhiti's creative community and be the recipient of so much time,  
 group, touring and collection-focused exhibitions. We are so fortunate to be able  
 and present) were represented in the year's programme which included solo,  
 16 temporary exhibitions and 38 public programmes. Over 130 local artists (past  
 We continued to celebrate Tairāwhiti's unique art, culture and history, delivering

across the region took part in museum education programmes.  
 highest community facility satisfaction ratings in the district. 7001  
 numbers in pre-Covid years) and received a 94% approval rating - one of the  
 We welcomed 44,716 visitors to the museum (only slightly less than our visitor

Our Annual Report for 2020/21 is available on our website now and I'm proud to  
 share some highlights and achievements from the past year with you.

As the year draws to a close and we prepare for a Tairāwhiti summer amid the  
 uncertainty of the evolving Covid-19 pandemic I am reflecting on the creativity  
 and resilience of museum staff, volunteers, and everyone we have partnered with  
 over the past year. It has certainly been more challenging than usual to ensure the  
 continuity and vibrancy of the museum, and on behalf of staff and the museum  
 trust board I extend our sincere thanks to everyone who has supported us.

**FROM THE DIRECTOR**

The 5 Most popular LinkedIn Learning courses of 2021 were. (according to [www.linkedin.com](http://www.linkedin.com))

1. Unconscious Bias with Stacey Gordon  
 What you'll learn: Our unperceived biases and past experiences can have a negative effect on how we communicate with others, or perform our jobs, and can even impact overall productivity in the workplace. Join diversity expert Stacey Gordon to identify some of the most common forms bias can take, and uncover strategies for identifying and overcoming those personal or even organizational biases.

2. Strategic Thinking with Dorie Clark  
 What you'll learn: As you work to ascend any company ladder, thinking on big and small scales today and with the future in mind, is essential. This course teaches managers and leaders how to use strategic thinking to guide teams and develop solutions to key business problems. Follow Dorie Clark as she shares ways to carve out time to gather data, review past decisions, create a vision for the future, and implement strategic thinking within your team.

3. Excel Essential Training (Office 365/Microsoft 365) with Dennis Taylor  
 What you'll learn: Across companies and industries worldwide, Excel is an organizational linchpin for managing, calculating, and analyzing data. The more knowledgeable you are in it, the more valuable you'll be. Excel expert Dennis Taylor helps accelerate your learning curve as you tackle powerful functions and features like PivotTables and chart building. You'll also discover techniques to navigate multiple worksheets, and formatting shortcuts to help save you time.

If you have any questions please contact the library team by phone (06) 867 6709 or through the library website. [www.gpl.govt.nz](http://www.gpl.govt.nz) Alternatively we would be happy to help you when you next visit the library.

Noho ora mai – Be safe and well.  
 Beka Melville Customer Services Librarian - Promotions and Events

# EXHIBITIONS AND EVENTS : December 2021 - February 2022

## Tū te Whaihanga A recognition of creative genius

7 October 2019 – May 2022

Sacred taonga that left the shores of Te Tairāwhiti 252 years ago returned home for an exhibition at Tairāwhiti Museum in 2019 and this exhibition has now been extended until May 2022.

*Tū te Whaihanga* is the result of the determination by Tairāwhiti iwi for the taonga to return to reconnect with their descendants, to reclaim the knowledge they hold, and to sustain their legacy.

The 37 taonga in *Tū te Whaihanga* include some of those which left on board the HMS Endeavour, after its first voyage to Aotearoa in October 1769. The taonga include eight painted hoe paddles, traded and gifted at sea off Whareongaonga (south of Tūranganui-a-Kiwa) on October 12, 1769, and te poupou o Hinematioro from her whare on Te Pourewa Island on October 28, 1769. Other taonga include rākau (weapons), kākahu (cloaks), tātua (belts),



*Rei-puta* whale-tooth necklace. Great North Museum Hancock

## We Can't Stop Now Gisborne Printmakers' Group 1976-2021

9 October 2021 – 5 December 2021

Handmade prints by 31 past and present members of the Group celebrate 45 years of printmaking in the Lysnar House Studios, located behind Tairāwhiti Museum. The prints on display have been created by zinc etching, dry point, collagraphs, solar plates, lino cuts and lithographs. Appreciation is given to three printmakers, Doreen Costello, Penny Ormerod and Phyllis Underdown who helped establish the Group in 1976. Plates and tools used in the printing processes are also on display.

An illustrated extended catalogue, *'We can't stop now'* relates the history of the Gisborne Printmakers' Group and the printmaking studio in Lysnar House, and includes images of prints by the exhibiting artists. This can be purchased in the Tairāwhiti Museum shop.



*Gisborne – City with Flags* Phyllis Underdown

## The Creative Gene Heather Van Wyk and Raymond Crafts

27 November 2021 – 23 January 2022

"My interest in calligraphy started at the age of 8 when my Scottish grandfather taught me copper plate writing. My interest in Celtic Art, and later on the illuminated manuscripts of 13th to 15th century Europe, intrigued me and I have continued to study and reproduce them. The calligraphic styles of calligraphers of England and Europe in the seventeen hundreds widened my scope of the creative side of my character. This opened up a range of my own." Raymond Crafts

"Forty eight years ago I attended a pottery evening class at Te Karaka High School and ever since I have loved working with clay. I didn't have a kiln so I joined the Gisborne Pottery Group and I am still a member.

My Studio is my own little world. It's a place where nothing else matters and I can lose myself and just be in the creative zone. Although I also paint I find it is the tactile quality of clay that gives me the most enjoyment." Heather Van Wyk



Calligraphy by Raymond Crafts

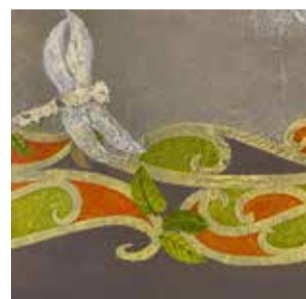
## Be the Taniwha Tai and Kaaterina Kerekere

4 December 2021 – 20 March 2022

At the beginning of this series, our concepts, research and development focused on issues of Wai, natural resource management, knowledge, power, control, wai and why? But as we continued to blend work and art, with life, with the community, – we saw reoccurring patterns throughout all aspects in our communities and our villages. This new series of mixed media art works delves into the many challenges and issues that simmer beneath the surfaces, that too many of us observe and then say, "someone else will sort it out".

This exhibition is a tribute to our leaders who challenged the status quo, who paved pathways of empowerment, breaking barriers by bringing issues to the surface. When we refer to leaders, we are talking about those who have walked alongside our communities, encouraging us to challenge, to speak up and express our views. We also give huge respect to our whānau who follow and continue to disrupt, shift and create places for voice and movement.

And for everyone else, maybe its time to stop 'care-taking' and start 'taking care' of our futures. Challenge. Disrupt. BE THE TANIWHA.



*Autumn Night* - Tai Kerekere

## Kōaka o Whakaaro Toihoukura School of Māori Visual Art & Design

11 December 2021 – 13 February 2022

*Kōaka o Whakaaro* is an exhibition of new works by the students and staff from Toihoukura School of Māori Visual Art and Design, showcasing the latest in emerging talent. This exhibition is an acknowledgement of individual contributions to a collective whakaaro or wānanga. A collective that offers a safe space for artists, a place of healing and life after another tough year. It is with hope that these works and this exhibition will underline the optimism and direction of this new world we now live in.

These new works present visual narratives that have been created in unprecedented times and show a resilience in the face of adversity. 2021 has been another uncertain and unstable year but it has also been an exciting time for creatives who are again forced to hover outside of their comfort zones producing some of Toihoukura's most powerful work to date.

The students exhibiting this year are from Certificate Year 1, Degree Years 1-3, Honours and Masters programs. The current tutors are Steve Gibbs, Tā Derek Lardelli, Erena Koopu, Makarini Solomon, Ayson Lewis, Ngaire Tuhua and Denise Te Hau.



*Rāwhitiroa* Huia Edmonds and Ngaire Tuhua

## Pride in Tairāwhiti Tairāwhiti Rainbow Collective

28 January 2022 – 27 February 2022

He mihi matakukui matakookoa ki a koutou katoa i tēnei wāhanga o te tau, ki nga whānau uenuku, aniwaniwa, kopere, takatapui nau mai whakapiri mai.

Tēnei te mihi ki ngā pae maunga, ngā awa, ngā iwi me ngā hapā o te Tairāwhiti. Mai te rangi ki te whenua, he mihi maioha tēnei ki a koutou katoa.

The Tairāwhiti Rainbow Collective (TRC) was established in 2019. It brings together Qmunity Youth Gisborne, Aniwanuiwa Tairāwhiti and Tairāwhiti Rainbow Action. Its members are LGBTQI+ communities and allies.

We have focussed our efforts over the past three years on advocating for a region that is safe, inclusive and supportive of our LGBTQI+ communities.

This inaugural exhibition is a partnership between the Tairāwhiti Rainbow Collective and Tairāwhiti Museum to coincide with New Zealand's Pride month, February 2022.

In it you will hear and see the stories and experiences of some of our LGBTQI+ community members who have lived and grown up in Tairāwhiti.

We invite you all to join us at this exhibition; to share some of our stories, and to contribute with your own.



## Out of the Closet The Stewart Whānau Collection

19 February 2022- 3 April 2022

*"If art flows through you naturally, then you are meant to be an artist"*

Padre William Gray  
Adrienne Stewart

*Out of the Closet* is a collaborative arts and crafts exhibition presented by weaver Adrienne Stewart and her multi-talented whānau. Adrienne's parents, Adrian and Horowai Stewart both of Te Aitanga-a-Hauiti descent have a deep-seated passion for their various arts and crafts practice and over the years this fervour has been passed down to their children and mokopuna (grandchildren).

Since then this elementary sharing of knowledge and skills by Adrian and Horowai Stewart has given the younger generation the impetus to seek out further educational opportunities enabling them to broaden their artistic horizons. Over time, a number of whanau works have been collected and retained at the Stewart's Hudson Street 'nest'.

For this exhibition a selection of the 'Stewart Whānau collection', which includes a variety of woven pieces, will be brought out from the Hudson Street 'closet' and displayed together for the first time, for all to enjoy

Nau mai, haere mai...



## Jack C Richards Decorative Arts Gallery

An item of feature in the Jack C Richards gallery this quarter is a sculpture by self-taught New Zealand artist Harry Watson (1965 - ). The artwork, *Box of Birds*, is created predominantly in wood. It features an angel standing amongst a group of decapitated birds, atop a decorative box. The birds include a Starling, Paradise Duck, Quail, Takahē, Magpie, Falcon, and Heron. In an artist's statement, Watson summarised:

*The angel is a bit severe and she carries a weapon (Pole axe). She is a fascist greenie upset that some of the birds she is trying to look after have become extinct. The bronze coloured symbol [featured on the front of the decorative box] is a 'triskeles' a solar symbol favoured by the Celts to whom birds were messengers from the gods, just as angels are messengers in Christian belief. So the gods are telling us to celebrate our natural environment. Not all however is necessarily a box of birds in our world.*



*Box of Birds*, Harry Watson

## Posing, Not Posing

Photographs are for sharing and people have always wanted to look their best.

By taking a look back through the museum's collection in *Posing, Not Posing*, we not only seek to understand the history of portrait photography but understand how we present and see ourselves.



*Portrait* by Alan L Gordon

## Places and Faces

Fred Foster found a way to make a dollar. Well pre-decimal pounds actually. His plan was to learn how to use a camera and make photographs. That accomplished he took his camera and his sale like charms to his neighbourhood. Knocking on the doors of homes, many newly built, he would talk the lady of the house into have her and her family photographed in front of their home.

This exhibition displays the results of those whom posed for Foster in the early 1900s.



## Long-term Exhibitions



**Watersheds | Ngā Wai Pupū**  
Encounter famous people, significant events, interesting places and wonderful objects that tell the stories of arrival, survival, struggle and transformation which have shaped Tairāwhiti.

**Te Moana Maritime Gallery**  
Glimpse into 1000 years of maritime myths, legends, stories and development in the Tairāwhiti East Coast region.



**The Star of Canada**  
Explore the two-storied wheel-house and captain's cabin of the Star of Canada, a cargo steamer wrecked on rocks on the Gisborne foreshore on 23 June 1912.



**Wyllie Cottage**  
Visit Wyllie Cottage, the oldest European house still standing in the Gisborne area. Recently restored with new displays.

## Captain's Cabin Spring Clean

This spring we took the opportunity to do some cleaning in the Captain's Cabin in the Star of Canada. Even inside display cases, objects on display do gather dirt over time. Collections team Maddy and Megan got behind the glass to carefully clean each object in the cabin, and also took the opportunity to check their condition and status. Cleaning mostly involved using a vacuum cleaner and a soft hake brush to gently remove dust from the object's surface. While it can be a slow process, the results are gratifying and we hope our visitors will enjoy the sparkling clean cabin over the summer months.



## Support local artists this Christmas

The Tairāwhiti Museum shop is stocked with all your shopping needs for Christmas with gifts to suit all ages. Beautiful kete, jewellery, pottery, scarves, art cards and unique toys and games to mention a few. Support your museum and talented local artists like Heather Van Wyk, Mary Stonehouse, Lee Olsen and Sarah Spence.

