



Green sea sponge  
Leah McCann

## Exhibitions, News & Events

Quarterly newsletter of the Tairāwhiti Museum & Art Gallery  
Te Whare Taonga o te Tairāwhiti  
March 2022 ISSN 1117-5890



## SHOP

Our shop holds a fabulous range of product to choose from and we continue to add new items. Whether you are looking for a gift, wanting to send something overseas or buy a treat for yourself, there is something for everyone.

We believe there are some wonderful choices for all occasions, so do come and have a look. As always, the museum continues to support local artists including Seymour May, Julia Gould and Michael Stammers. All purchases at the museum shop provide funding for the museum so not only can you buy a fabulous present, but also support the museum at the same time. Friends of the Museum receive a 10% discount on all purchases (excluding sales).



You can now purchase museum publications from our new online shop.  
www.tairawhitimuseum.org.nz

## EXHIBIT CAFE



Great coffee and food, prepared daily. **Exhibit Cafe** is open for morning tea and lunch. Fresh and seasonal counter food or the blackboard menu. Gluten free and vegetarian options also available on request. Enjoy the sun on the deck with views of the river & park, or inside all year round in air-conditioned comfort.

Eugenie and her staff bake on the premises using predominantly local produce. **Exhibit Cafe** also offers catering services.

10% discount for Friends of the Museum

Opening hours: 9.00am to 2.00pm Monday to Friday  
Closed weekends during winter.

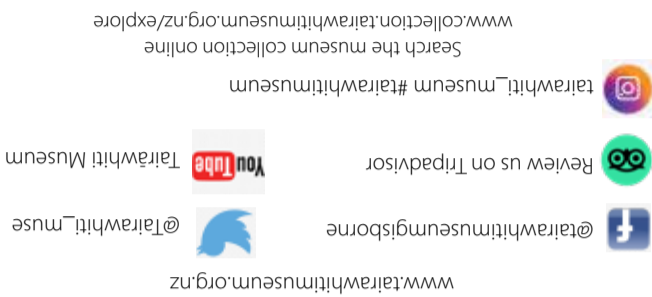


Enquiries contact: Eugenie Dervin at Tairāwhiti Museum on (06) 867 3832. Mob: 021 222 7012.  
www.tairawhitimuseum.org.nz  
Facebook @ExhibitCafe

Mon. - Sat. 10am-4pm  
Sun. 1.30pm-4pm  
Stout Street • Gisborne  
06 8673832



Thank you to our exhibition preview sponsors



Search the museum collection online  
www.collection.tairawhitimuseum.org.nz/explore

Review us on TripAdvisor  
tairawhitimuseum #tairawhitimuseum

www.tairawhitimuseum.org.nz

## CONNECT AND SHARE WITH US ONLINE

Any donation you make will be invested, protected and grown each year, with surplus investment income granted back to the museum annually. If you would like more information call Glenda at the Sunrise Foundation 06 867 7939 or visit www.sunrisefoundation.org.nz or www.tairawhitimuseum.org.nz.

Foundation to support collection development and care. We are grateful to Michael and Ann Muir for making a donation to establish the fund; and to Les McGeevy, who when he passed away in 2019 left a generous bequest to the museum which has now also been transferred to the fund.

Tairāwhiti Museum has recently established an endowment fund with The Sunrise Foundation to support collection development and care. We are grateful to Michael and Ann Muir for making a donation to establish the fund; and to Les McGeevy, who when he passed away in 2019 left a generous bequest to the museum which has now also been transferred to the fund.

## Tairāwhiti Museum Endowment Fund

## LEAVE A LASTING LEGACY

Please sign up to our e-news, check our website or follow us on our social media pages for the most up-to-date information on museum events.

## UPCOMING EVENTS

## H B WILLIAMS MEMORIAL LIBRARY

As our world continues to change beyond our control, so do our interests, our priorities and our reading habits.

The collection and resources at the HB Williams Memorial Library are in a constant state of review and renewal. One constant, however, is our Large Print collection. Tairāwhiti residents are avid readers, and our golden generation emphasises this communal love of literature.

Thanks to the ongoing support of the *HB Williams Memorial Library Book Trust* the library recently purchased a substantial number of new titles for the Large Print collection.



The trust was formed in 1983 to provide additional funds for the purchase of books in Tairāwhiti, providing an ongoing living legacy for the community; it is an independent charitable trust, administered by three local trustees.

Anyone can contribute to the Trust...

- Bequest (make provision in your will)
- Donations in memory of a family member or friend
- Service groups, clubs, and societies
- Mark a company promotion or anniversary



Director  
-Eloise Wallace

With the close of the exhibition it will be the start of a new chapter, and my hope is that opportunities for Tairāwhiti iwi to reconnect and reclaim the knowledge such taonga hold and carry that legacy into the future will continue to grow.

This project was many years in development, and was accomplished due to the support and work of many people, in particular Hei Kanohi Ora, the iwi governance group established to work alongside the museum team. It also couldn't have happened without support from Trust Tairāwhiti, Te Puna Tahua Lottery Grants Board and the New Zealand Government Indemnity Scheme. While this exhibition was the first in New Zealand to utilise the government indemnity scheme to bring taonga Māori home on loan from abroad, I hope it won't be the last and that it will continue to get easier to make such collaborative projects happen in the future.

If you haven't yet visited the exhibition, don't miss the opportunity to come in before 1 May. As the taonga will now travel back to Europe, and then to the different museums where they reside, the opportunity to see them in Tairāwhiti, in Aotearoa, and indeed together in an exhibition may not arise again soon.

Sadly though, it is time to close 'Tu re Whaihangā: a recognition of creative genius', on the 1st May. The 37 taonga which returned home in 2019 after 250 years, will be winging their way back to Europe again. We do feel fortunate that we were able to extend their stay one and a half years longer than originally planned.

While we expect our events programme to continue to be disrupted for some months we are able to continue with an exciting changing exhibition programme. We have twenty exhibitions in our programme this year – with a strong focus on local history, local artists, as well as national and international touring exhibitions in the mix.

The introduction of new Covid-19 protection measures here at the museum to help keep each other safe has been a change, but the response from our community has been overwhelmingly positive. We are grateful for your patience and respect for our team as you go through these extra steps with us when you visit the museum. We are endeavouring to make your visit 'almost' business as usual.

Welcome to the first edition of Tui Tui Tui! For 2022, while we are uncertain what the year ahead will bring, we know we will be able to adapt and deliver the best museum service we can in Tairāwhiti thanks to strong, ongoing community support.

## FROM THE DIRECTOR

Another method that enables the expansion of the large print collection is our participation in a regional library consortium; Public Libraries of the Hawke's Bay and East Coast Region create the Combined Regional Large Print Collection. Stock is rotated between Hastings District Libraries, Napier Libraries, Tararua Libraries, Central Hawke's Bay District Libraries, Wairoa Centennial Library and the HB Williams Memorial Library. A globe label and cutter on the bottom of the spine of a large print book identifies a Regional large print book.

To register interest, make a donation or learn more about what our library has to offer, please see www.gpl.govt.nz, give us a call on (06) 867 6709 or ask one of our friendly Librarians on your next visit to the HB Williams Memorial Library. Nau mai Haere mai.



Thanks to the HB Williams Memorial Library Book Trust we are extending our large print selection.

GISBORNELIBRARY  
GISBORNE\_LIBRARY



Noho ora mai – Be safe and well.

Beka Melville Customer Services Librarian - Promotions and Events

# EXHIBITIONS AND EVENTS : March 2022 - May 2022

## Tū te Whaihanga A recognition of creative genius

7 October 2019 – 1 May 2022

Sacred taonga that left the shores of Te Tairāwhiti 252 years ago returned home for an exhibition at Tairāwhiti Museum in 2019.

*Tū te Whaihanga* is the result of the determination by Tairāwhiti iwi for the taonga to return to reconnect with their descendants, to reclaim the knowledge they hold, and to sustain their legacy.

The 37 taonga in *Tū te Whaihanga* include some of those which left on board the HMS Endeavour, after its first voyage to Aotearoa in October 1769. The taonga include eight painted hoe paddles, traded and gifted at sea off Whareongaonga (south of Tūranganui-a-Kiwa) on October 12, 1769, and te poupou o Hinematiaro from her whare on Te Pourewa Island on October 28, 1769. Other taonga include rākau (weapons), kākahu (cloaks), tātua (belts), whakairo (carvings) and adornments.

This exhibition will close on 1 May 2022.



*Rei-puta* whale-tooth necklace. Great North Museum Hancock

## Sea of Positivity Leah McCann

7 May 2022 – 3 July 2022

*Sea of Positivity*, is a collection of intuitive, abstract paintings and 3D wall sculptures inspired by ocean seascapes. "The intent is to evoke feelings of happiness, optimism and energy. Art for me is like a jump start that creates a spark of energy. It recharges your batteries and reminds us to marvel in the everyday. Each object was once a thought, just like a seed becomes a tree."

This artistic process is a spontaneous one for Gisborne-based artist Leah McCann, something she describes as meditative: "All sense of time and space is lost. It's a place of pure joy."

Her painting style is characteristically colourful and large-scale, the most visible example being her mural *Flower Mountain* on Bright Street. Using acrylic and metallic paints along with wood, resin and glue, Leah builds layers of colour before scratching back to reveal intricate patterns and textures.



*Green sea sponge*

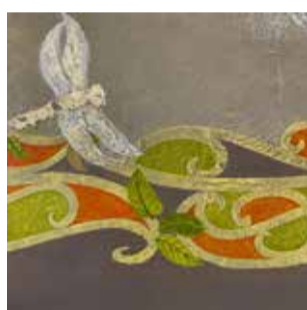
## Be the Taniwha Tai and Kaaterina Kerekere

4 December 2021 – 20 March 2022

At the beginning of this series, our concepts, research and development focused on issues of Wai, natural resource management, knowledge, power, control, wai and why? But as we continued to blend work and art, with life, with the community, – we saw reoccurring patterns throughout all aspects in our communities and our villages. This new series of mixed media art works delves into the many challenges and issues that simmer beneath the surfaces, that too many of us observe and then say, "someone else will sort it out!"

This exhibition is a tribute to our leaders who challenged the status quo, who paved pathways of empowerment, breaking barriers by bringing issues to the surface. When we refer to leaders, we are talking about those who have walked alongside our communities, encouraging us to challenge, to speak up and express our views. We also give huge respect to our whānau who follow and continue to disrupt, shift and create places for voice and movement.

And for everyone else, maybe its time to stop 'care-taking' and start 'taking care' of our futures. Challenge. Disrupt. BE THE TANIWHA.



*Autumn Night* - Tai Kerekere

## Let Me Be Myself The story of Anne Frank

26 May 2022 – 24 July 2022

ANNE FRANK STICHTING (Foundation) The Holocaust Centre of New Zealand

Imagine spending years in hiding because of prejudice and hate. This was reality for Anne Frank and the other residents of the secret annex in Amsterdam.

Developed by *Anne Frank House* in the Netherlands, and viewed by more than 10 million people in 80 countries, this exhibition explores what life in hiding was like for Anne, her family, and the other occupants of *Prinsengracht 263*.

By inviting us to consider events in war-torn Europe and during the Holocaust, the exhibition asks each visitor what they might do in similar circumstances. It not only highlights themes of identity, prejudice, and discrimination in the past, but also in society today. Alongside panels exploring contemporary ethnicity, gender, and disability issues, there are two created specifically for the exhibition's tour of Aotearoa, written in English and Māori.

In addition, *Anne Frank 'Let Me Be Myself'* focuses on the role of the upstanders who risked their lives to hide Jews in the secret annex. Without these people, the world would never have read Anne's diary nor her enduring message of hope: "In spite of everything I still believe that people are really good at heart."



Photo collection of the Anne Frank Stichting (Amsterdam)

## Out of the Closet The Stewart Whānau Collection

19 February 2022 – 3 April 2022

"If art flows through you naturally, then you are meant to be an artist"  
Padre William Gray  
Adrienne Stewart

*Out of the Closet* is a collaborative arts and crafts exhibition presented by weaver Adrienne Stewart and her multi-talented whānau. Adrienne's parents, Adrian and Horowai Stewart both of Te Aitanga-a-Hauiti descent have a deep-seated passion for their various arts and crafts practice and over the years this fervour has been passed down to their children and mokopuna (grandchildren).

Since then this elementary sharing of knowledge and skills by Adrian and Horowai Stewart has given the younger generation the impetus to seek out further educational opportunities enabling them to broaden their artistic horizons. Over time, a number of whānau works have been collected and retained at the Stewart's Hudson Street 'nest'.

For this exhibition a selection of the 'Stewart Whānau collection,' which includes a variety of woven pieces, will be brought out from the Hudson Street 'closet' and displayed together for the first time, for all to enjoy

Nau mai, haere mai...



## Jack C Richards Decorative Arts Gallery

My Journey with Lalique

I first encountered a Lalique vase in an antique shop in Cairo in the 1970s. The vase that caught my eye was Formose – a beautiful small vase with a fish motif and still one of the favourite pieces in my collection of over 100 vases. The vase has an art nouveau quality and is also reminiscent of images in Japanese art. At that time although I was familiar with the art glass of another French designer – Emil Galle (whose work you can also see in this gallery) – I knew nothing of Lalique, but having spent my entire earnings from a workshop I had just completed teaching at the American University of Cairo, I felt obliged to do some research to find out more about the work of Rene Lalique. I discovered that Lalique had designed many different kinds of beautiful objects, including jewellery, perfume bottles, and table ware. However what fascinated me the most were his designs for vases – over some 200 of which he produced during his lifetime.

Over the next few years I gradually started acquiring other pieces of Lalique, many from David Wenstein – a New York based internationally recognized specialist in Lalique – as well as others I came across in art galleries during my travels. In building up the collection I sought to assemble a collection that illustrated the extent and variety of Lalique's art vases, and also pieces that would complement each other in displays such as this one. I do hope you enjoy them as much as I do.

- Jack C Richards



*Lalique Case*

## Shine On Bronwyn Furlan and Kathy Grimson

5 March 2022 – 1 May 2022

We have enjoyed many years of quilt making and both of us have a traditional quilting and needlework background that has taught us the fundamental skills and rules that are required to create beautiful bed quilts.

This solid foundation of knowledge is now allowing us to bend the rules, experiment and push the boundaries. Using prompts like – 'make it tiny, combine it, make it part of a set, fold it, give it texture.....Make it Shine!'

As our work progressed for this exhibition, we started to develop a broader and deeper understanding of our challenge, *Shine On*, perhaps as a result of a second lockdown and its personal implications, our pieces started to incorporate the impact of nature on the human spirit and personal growth in trying times.

Quilting is often time spent alone in one's sewing room so having a shared project and objective is a wonderful chance to collaborate and bond. *Shine On* is ultimately a collection of pieces created by two friends celebrating our love of fabric, thread and creativity.



*Vessels* - Kathy Grimson

## Posing, Not Posing

Photographs are for sharing and people have always wanted to look their best.

By taking a look back through the museum's collection in *Posing, Not Posing*, we not only seek to understand the history of portrait photography but understand how we present and see ourselves.



*Portrait by Alan L Gordon*

## Places and Faces

Fred Foster found a way to make a dollar. Well pre-decimal pounds actually. His plan was to learn how to use a camera and make photographs. That accomplished he took his camera and his sale like charms to his neighbourhood. Knocking on the doors of homes, many newly built, he would talk the lady of the house into have her and her family photographed in front of their home.

This exhibition displays the results of those whom posed for Foster in the early 1900s.



## Harikoa te Ngākau Michelle Hinekura Kerr

25 March 2022 – 8 May 2022

The mahi in this exhibition was influenced by observations I made whilst spending time with my whānau during this Christmas summer break. Throughout the break my whānau assembled from the regions to camp on our ancestral land, next to our awa and at the feet of our maunga. Whilst there I witnessed such happiness amongst my whānau, and I asked myself "where was this increase in wellness coming from?" Which led to many a discussion with my whānau young and old during our numerous hākari together.

As a whānau we discussed the ancestral umbilical connection we have with the whenua. We deliberated on the healing powers of our awa and the life force drawn from our maunga that is emitted through us. I witnessed our rangatahi benefited from the intergenerational knowledge being passed down to them from their nanny and papa. We fished with handlines, set the flounder net, dived for kai moana, slept in the afternoon, swam with our children in the awa, tended our maara, shared kai and reconnected, we laughed and cried and we realise in these tough times that life is too short and we need to love and appreciate the time we have together while we can.

So based on these new revelations and observations, I wove my taonga for my exhibition.



## Long-term Exhibitions



**Watersheds | Ngā Wai Pupū**  
Encounter famous people, significant events, interesting places and wonderful objects that tell the stories of arrival, survival, struggle and transformation which have shaped Tairāwhiti.

**Te Moana Maritime Gallery**  
Glimpse into 1000 years of maritime myths, legends, stories and development in the Tairāwhiti East Coast region.



**The Star of Canada**  
Explore the two-storied wheel-house and captain's cabin of the Star of Canada, a cargo steamer wrecked on rocks on the Gisborne foreshore on 23 June 1912.



**Wyllie Cottage**  
Visit Wyllie Cottage, the oldest European house still standing in the Gisborne area. Recently restored with new displays.

## Textiles Alive

8 April 2022 – 12 June 2022

For their latest exhibition, four textile artists have set themselves the challenge to focus on creating oversized fabric artworks all presented in their uniquely individual styling.

*Textiles Alive* is a stitched journey mapping a love of fibre and fabric. These large-scale works meander through gardens, dive into seascapes and visit lighthouses, immersing the audience in the artists' devotion to textiles.

The artists contributing to this fabric festa are Irene Smith, Morva Thompson, Lina Marsh and Deb Williams.



*A Journey Through The Garden*

## Recent Acquisition

The museum recently acquired a painting by Barbara Norman entitled *Farewell Kelvin Rise*. The artwork was painted on September 21st 1975, which was the final weekend Lysnar House stood complete on its original site, in its original garden. The house has since been moved and the ballroom separated and moved to the junction of the three rivers. The riverbanks have also been altered since 1975 and the Lysnar garden is now *Kelvin Park*.

